

Below-Ground Tanking Systems

Robust, watertight sub-structure encapsulation





Below-ground tanking involves the application of a waterproofing layer (system) to prevent water ingress; usually to the outside of the sub-structure of a building such as a foundation or basement.

Other forms of tanking include the lining of retaining walls, cellars, lift shafts, tunnels, plaza decks, roof gardens and planter boxes. The common aspect of all of these examples, (above or below-ground), is that they become covered with back-fill, concrete, screed/tiles, or growth media.



Proven Methods

Peel & Stick and modified bitumen (torch-on) systems have successfully kept water out of buildings in New Zealand for decades.

World-Class Systems

Carlisle CCW and General Membrane SpA are amongst the best manufacturers in the world of systems for this field.

Approved Applicators

To ensure a high standard of workmanship, Viking Roofspec only allows its Approved Applicators to install its systems.

Waterproofing Membrane Association Inc. (W.M.A.I.)

Viking Roofspec is an active member of the W.M.A.I.; an incorporation of companies whose goal is to lift the standard of waterproofing in NZ. The W.M.A.I. is formulating of a "Tanking Code of Practice" for the Department of Building and Housing.

Quality Typical Details and Specifications

Viking's user-friendly, professional typical details (in DWG and PDF) as well as Masterspec specifications, are readily down-loadable from its website:

www.vikingroofspec.co.nz

Warranties of Substance

Not all warranties are equal. A Viking 20 year warranty against defects is backed by the \$250 million turnover Tiri Group.

One Supplier

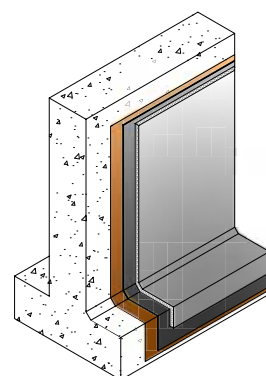
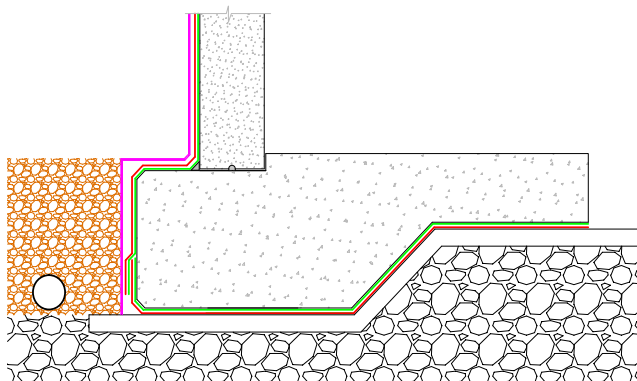
Why not keep the specification of your tanking systems in the same professional materials supply basket as your roofing and decking ones?



Why Viking Tanking Systems?

"Once concealed, you don't get a second chance at tanking. It must be installed right the first time, or the consequences could be disastrous....."

For more information visit
www.vikingroofspec.co.nz
or call 0800 729 799



Viking Peel & Stick

Viking Bituclad⁴

Viking Peel & Stick is a self-adhering waterproofing system consisting of a 1.5mm thick rubberised asphalt membrane, on the face of which a heavy-duty, high impact polyethylene film is laminated. The adhesive side has a removable release sheet which is peeled back at the time of application to the substrate.

Peel & Stick is BRANZ appraised, No. 826 (2014)

Viking Bituclad⁴ is a reinforced polyester and fiberglass APP (atactic polypropylene) modified bitumen membrane - torch applied to a compatibly primed surface. This 4mm thick x 1.0m wide x 10m long membrane is supplied exclusively by Viking for the tanking sector.

Bituclad 4 is BRANZ appraised, No. 864 (2014)

Advantages

- Full-adhesion eliminates water migration
- Bond improves over time
- Adheres to various substrate types
- 20.4m long rolls - fewer seams
- Elastomeric properties - forgives movement and provides flexibility over cracks
- Resists hydrostatic pressure
- Mechanically strong
- Ease of application assists quality of finish
- Cold-applied - no flame required; especially useful in restricted areas

Advantages

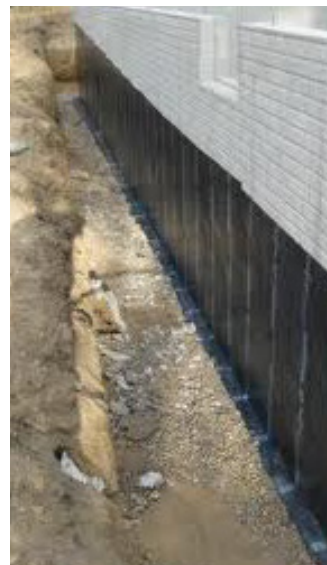
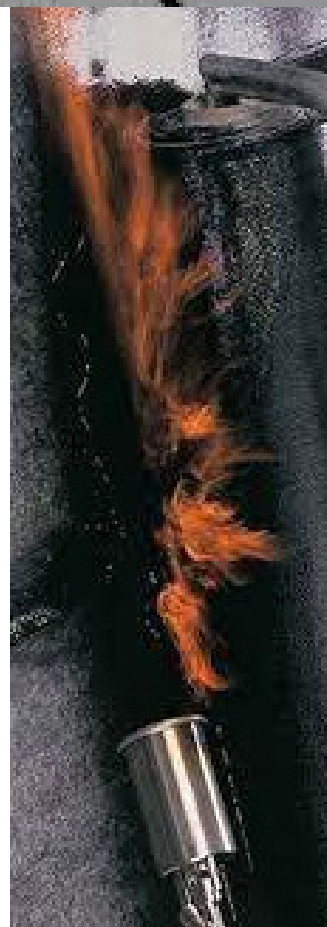
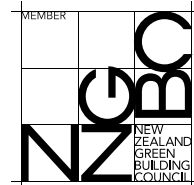
- Cold flexibility to (-10) degree celsius
- Torch-applied - maximum adhesion
- 4mm thick - Very high puncture resistance
- Very high chemical resistance
- Resists hydrostatic pressure
- Mechanically strong
- Age-old, proven successful method

Components in the system

- Peel & Stick membrane - 1.5mm x 0.914m x 20.4m
- Bituminous Primer - 19 litres
- Liquid Mastic Sealant 750ml
- Protection board
- Drainage board

Components in the system

- Bituclad⁴ membrane - 4mm x 1.0mm x 10m
- Bituminous Primer - 20 litres
- Bituminous gum
- Protection board
- Drainage board



Warranty

Viking Peel & Stick and Viking Bituclad⁴ are backed by a 20 year warranty against defects.

Technical Data

Viking Bituclad⁴

Property	Test Method	Test Results
Watertightness (metodo B)	EN 1928:2000	Pass
External fire performance	EN 13501-5	F roof
Reaction to fire	EN 13501-1	EUROCLASSE F
Shear resistance of joint - heat lap - side lap	EN 12317-1	650 400
Tensile properties - maximum longitudinal tensile strength - maximum transversal tensile strength - longitudinal elongation - transversal elongation	EN 12311-1	750 N/50 mm 500 N/50 mm 35% 40%
Resistance to impact	EN 12691	1000 mm
Resistance to static loading	EN 12730	15 kg
Resistance to tearing (nail shank) - longitudinal - Transversal	EN 12310-1	140 N 140 N
Dimensional stability	EN 1107-1	≤ 0.5%
Flexibility at low temperature	EN 1109	-10°C
Flow resistance at elevated temperature	EN1110	120°C
Artificial ageing by long term exposure to elevated temperature	EN 1269 + EN 1110	110°C
Water vapour transmission properties		μ= 20.000

Viking Peel & Stick

Property	Test method	Test Results
Colour	-	Black
Tensile (Membrane)	ASTM D415	325 psi
Tensile (Film)	ASTM D882	5, 000 psi
Elongation	ASTM D412	350%
Permeance	ASTM E96	0.05 perms
Low Temp. Flexibility (100 Cycles)	ASTM D1970 ASTM C836	Unaffected, @ 45° F Cracking Cycle* Unaffected @ -25° F
Peel Strength	ASTM D903	10lb / in
Lap Adhesion	ASTM D1876	19.0 lb/in
Puncture Resistance	ASTM E154	60 lb min
Soil Burial	GSA-PBS 07121	16 wks, no effect
H2O Absorption	ASTM D570	0.1% by wt
Hydrostatic Head	ASTM D751	230 ft

* 180° bend over a 1" (25mm) mandrel at -45° F (-43°C)

Roofspec
Viking

Taking care of detail

Auckland Office
80 Alexander Crescent, Otara
PO Box 14-541, Panmure
Auckland 1741, New Zealand

Christchurch Office
2 Nazareth Avenue, Middleton
PO Box 9117, Tower Junction
Christchurch 8149, New Zealand

T. 0800 845 464
F. 0800 845 460
orders@vikingroofspec.co.nz
www.vikingroofspec.co.nz