



# Viking SilCoat

Used over existing roof surfaces, Viking SilCoat provides protection to extend the life of a roof.

It is designed for repairs and maintenance and can be applied to virtually any existing roofing surface to provide a weather tight seal, protecting your roof from the effects of New Zealand's sometimes severe weather conditions.

## Where can it be installed?

Viking SilCoat is a remedial coating system designed specifically to be applied over existing materials like weathered bitumen, Butyl, EPDM, TPO, PVC, metal or liquid applied membrane systems.

## Why Viking SilCoat?

- SilCoat will stand up to harsh UV light
- SilCoat forms a seamless membrane that can tolerate pooling water
- SilCoat creates a smooth surface that offers excellent resistance to mould and mildew, making it easy to maintain
- Easy application makes SilCoat both efficient and economical, while maintaining maximum durability.

## Installation

Viking SilCoat is a remedial coating system designed specifically to be applied over existing materials like weathered bitumen, butyl, EPDM, TPO, PVC, metal or liquid applied membrane systems.

Viking SilCoat can be applied with or without a primer, dependent on the roof condition. As every roof is different, the best way to be sure that you have maximum bond to the roof will be to conduct the adhesion test outlined in our application guide. To ensure a professional finish Viking SilCoat can only be installed by Viking Approved Applicators.

To find a Viking Approved Applicator in your area visit our website [www.vikingroofspec.co.nz](http://www.vikingroofspec.co.nz) or call us on 0800 729 799.

## Warranty

Viking SilCoat is covered by a 5 year product warranty, but can last up to 10 times longer under the right conditions. The key to getting the most out of the roof in its existing condition is the right planning, preparation and application.

## Protection and Maintenance

If you need to walk on the roof, then the SF2036 Silicone Walkway System provides a durable rooftop walkway for maintenance traffic. Unlike adhered mats, WalkPad becomes an integral part of the roof and the yellow colour provides a highly visible walkway. WalkPad Granules can provide additional traction and resistance to wear.

## Need to know more?

Below is further information you may like to know about Viking SilCoat. If you are curious for more information please don't hesitate to contact us.

How do you treat joins or damage to the existing roof material?

Application of Viking SilCoat will include addressing existing damage, before applying additional layers of new membrane and reinforcing at critical points for maximum durability.

Is Viking SilCoat suitable for the collection of potable water?

No, it is not suitable for potable water collection. The Viking Enviroclad and Epiclad systems are certified for potable applications.



**Viking** Roofspec

*Taking care of detail*

**Auckland Office**  
80 Alexander Crescent, Otara  
PO Box 14-541, Panmure  
Auckland 1741, New Zealand

**Christchurch Office**  
2 Nazareth Avenue, Middleton  
PO Box 9117, Tower Junction  
Christchurch 8149, New Zealand

**T.** 0800 729 799  
**F.** 0800 729 788  
[info@vikingroofspec.co.nz](mailto:info@vikingroofspec.co.nz)  
[www.vikingroofspec.co.nz](http://www.vikingroofspec.co.nz)

### Can Viking SilCoat be painted over?

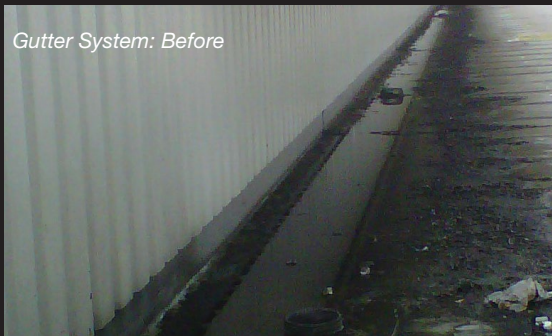
As a silicone coating system, Viking SilCoat is designed to be the finished product. It's coloured white or grey and it cannot be painted.

### Do I need a Consent to maintain or repair my

Not usually - the Building Act excludes normal maintenance from requiring a consent. You can find more information at [www.dbh.govt.nz/bc-no-consent](http://www.dbh.govt.nz/bc-no-consent) or ask your local council.

## Viking SilCoat in Action

Viking SilCoat can be installed over virtually any existing roofing surface to provide a weather tight seal that protects a roof. Check out the before and after effects from applying Viking SilCoat.



*Gutter System: Before*



*Gutter System: After*



*Industrial Building: Before*



*Industrial Building: After*



*Residential Home: Before*



*Residential Home: After*



*Warehouse Roof: Before*



*Warehouse Roof: After*

**Viking** Roofs spec  
Taking care of detail

**Auckland Office**  
80 Alexander Crescent, Otara  
PO Box 14-541, Panmure  
Auckland 1741, New Zealand

**Christchurch Office**  
2 Nazareth Avenue, Middleton  
PO Box 9117, Tower Junction  
Christchurch 8149, New Zealand

**T.** 0800 729 799  
**F.** 0800 729 788  
[info@vikingroofspect.co.nz](mailto:info@vikingroofspect.co.nz)  
[www.vikingroofspect.co.nz](http://www.vikingroofspect.co.nz)